

sb

www.sb.iaks.info

International magazine for
sports, leisure and recreational
facilities

Internationale Fachzeitschrift
für Sportstätten und Freizeit-
anlagen

Revista internacional especial-
izada en instalaciones deporti-
vas y recreativas

45th volume
45. Jahrgang
Año 45

5/2011



IOC/IAKS Award
IPC/IAKS Distinction
Architecture and Design Award for Students and Young Professionals



INTERNATIONAL
OLYMPIC
COMMITTEE





Hemer, Germany

Athletes' building



The athletes' building in Hemer was erected in connection with the Land Garden Show and served during the show as a café and changing room building for a neighbouring skate park. The building is now being converted for a Type B athletics track and serves as a changing room and clubhouse for athletes of a Hemer club and for school games.

The jury liked the building very much: "The impressive feature of the athletes' building in Hemer is its simple and clear statement. It 'rests' in the true sense of the word at the interface between sport and nature. The bright green façade surface establishes the link with the turf pitch and focuses the gaze on the essential, that of sports use. Above, the

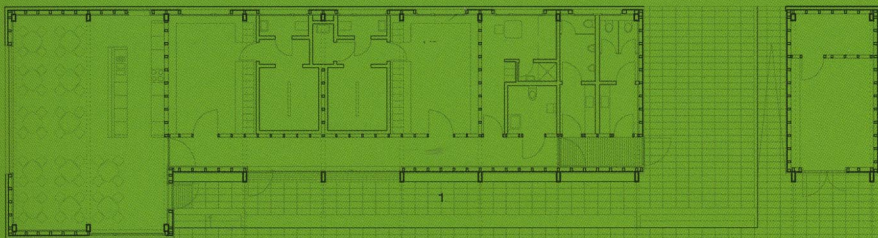
wooden structure of the roof surface accomplishes the visual transition to the surrounding woods. The horizontal wooden slats support the building's linear statement.

In the interior, function and design are also skilfully combined. Smooth surfaces convey an impression of simplicity and

Address
Sportgebäude Hemer
Deilinhofer Str.
58675 Hemer
Germany

Client/Operator
Sauerlandpark Hemer GmbH
Nelkenweg 5-7
58675 Hemer
Germany
www.sauerlandpark-Hemer.de

Architect
Kersten+Kopp Architekten
Skalitzer Str. 80
10997 Berlin
Germany
www.kersten-kopp.de



IOC/IAKS AWARD 2011

SILVER



tranquility, and largely untreated wood surfaces establish ties with nature. Where other materials are needed for functional reasons, the bright red chosen here adds a sportingly energetic touch.

The designers have succeeded in accommodating all the required functions and

rooms in ideal fashion in an elongated building that leaves nothing to be desired in terms of form, materials and colouration.

This athletes' building is exemplary."

Start of construction 05/2009
 Commissioning 11/2009
 Size of site 29,500 m²
 Construction costs 864,000 euros

Spectator facilities
 seats: 80 standing spaces: 120
 Number of athletes/users in 2010 20,000
 Number of spectators in 2010 12,000

